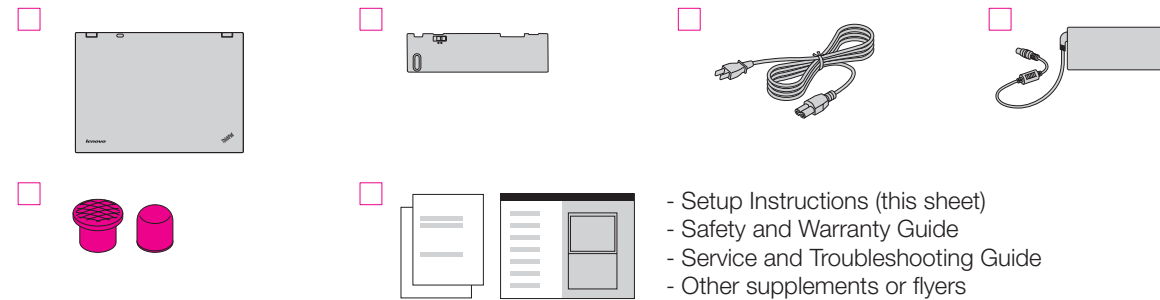


ThinkPad®



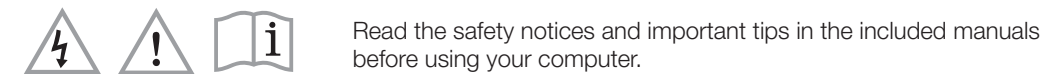
Unpack



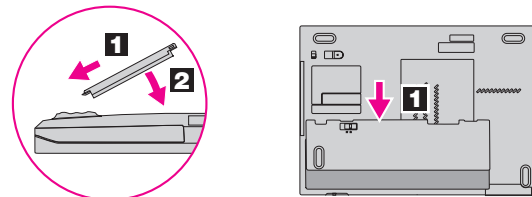
Notes:

- 1) Some models may contain items that are not listed.
 - 2) If any item is missing or damaged, contact your place of purchase.
 - 3) Everything for recovering factory-installed files and applications is in the Lenovo® partition on your hard disk.
- Important:** Before removing the Lenovo partition, be sure to create a recovery disc. For more information, see "Recovery overview" in Access Help.

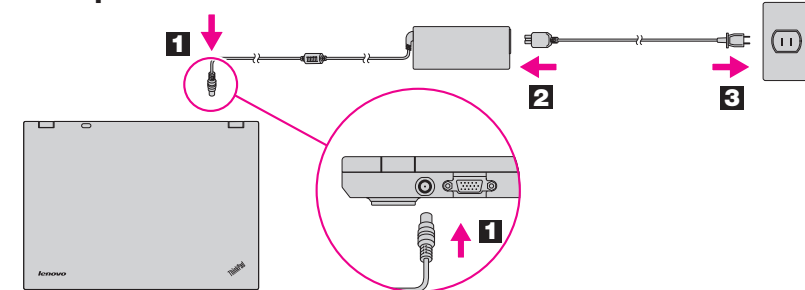
Initial Setup Instructions



1 Install the battery pack:



2 Connect to power:



3 Turn on the power:



4 Point and click with UltraNav® Multi-pointing Navigation System:

Press the TrackPoint® cap or move across the touch pad in the direction you want to move the pointer. The left and right buttons below the space bar and touch pad function like mouse buttons.

5 Configure the Operating System following on-screen instructions:

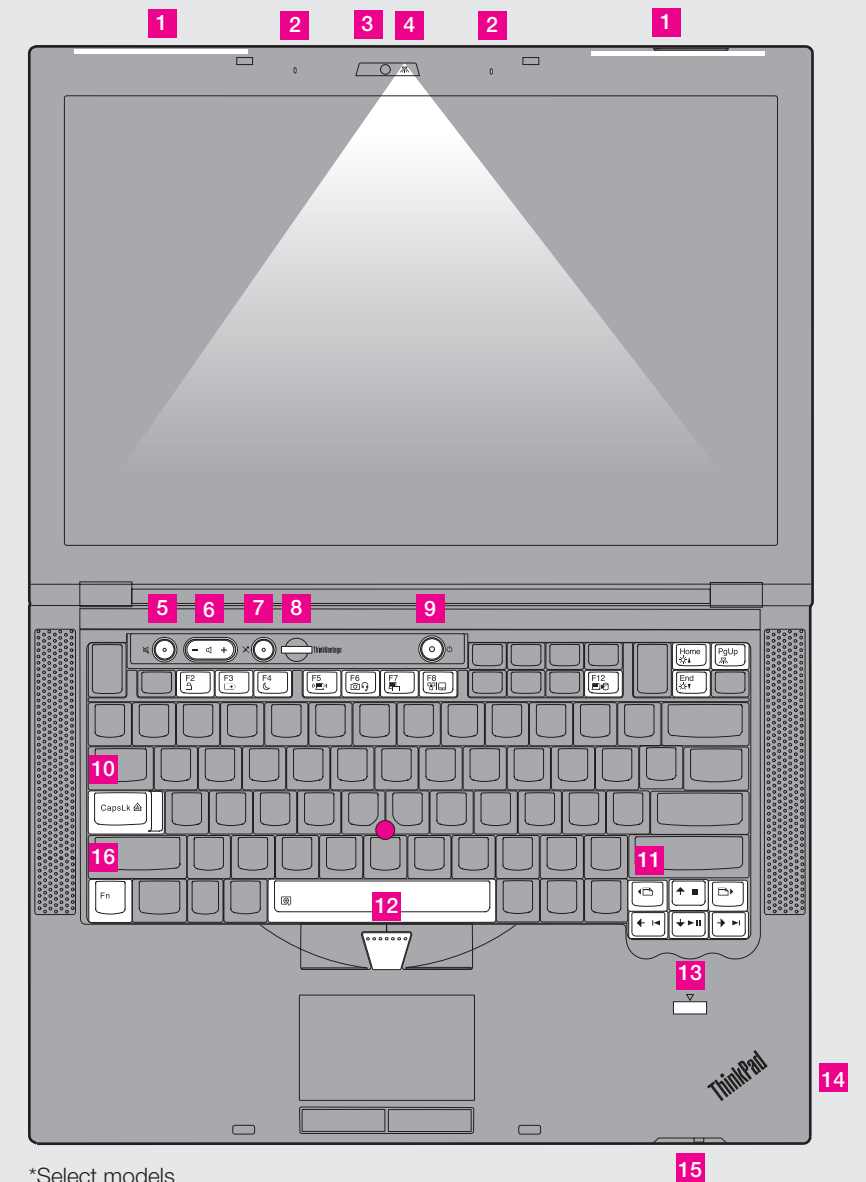
This process takes several minutes.

6 For more details, press the ThinkVantage® button:



ThinkVantage® Design

- 1 **UltraConnect™ wireless antennas**
- 2 **Built-in dual array digital microphone**
- 3 **Integrated camera***
- 4 **ThinkLight® keyboard light**
- 5 **Speaker mute button**
- 6 **Volume control button**
- 7 **Microphone mute button**
- 8 **ThinkVantage button**
- 9 **Power button**
- 10 **CapsLock indicator**
- 11 **Web browser back and forward**
- 12 **TrackPoint center button**
- 13 **Fingerprint reader***
- 14 **Wireless radio switch**
- 15 **One-handed latch**
- 16 **Fn key**



*Select models

Use in combination with other keys to access special ThinkPad® features.

F2	Lock your computer	F8	Change input device settings
F3	Manage battery & power	F12	Enter hibernation
Fn + F4	Enter sleep (standby)	PgUp	ThinkLight on/off
F5	Manage wireless connections	Media keys	Multimedia controls
F6	Change camera & microphone mute settings	Home	Change display brightness
F7	Change display settings	End	Magnify screen contents

Thank you for choosing a ThinkPad Notebook.

The ThinkPad Notebook renews the standard for mobility and capabilities.

Cutting-edge and stylish design

Your computer achieves industry-leading thinness, lightness, and durability in the 14-inch widescreen space by applying the next-generation ThinkPad "roll cage" technology, which uses a combination of carbon fiber and glass fiber.

Newly modified keyboard design

Your computer features newly modified keys, such as in-key and in-button LEDs, that show whether the power, mute, and CapsLock functions are on or off.

Energy-saving design

The energy efficiency of the design, along with the use of a low-voltage CPU, an SSD*, and a backlit LED display, enables longer continuous operation on battery power.

Green design

Your computer is rated EPEAT Gold for low energy use and minimal impact on the environment. It also meets the European Union's Restriction of Hazardous Substances standards, the Climate Savers efficiency standards, and the ENERGY STAR program requirements for computers.

Diverse connectivity options

Your computer provides you with advanced connectivity options, such as Gigabit Ethernet, wireless LAN, Wireless USB*, *Bluetooth** device, wireless WAN*, and WiMAX*.

To learn more about network connections, see "Connecting to the network" in Access Help.

*Select models

ThinkVantageTechnologies

ThinkVantage Technologies are advanced technologies that enable you to improve productivity, protect your data, and reduce overall lifecycle costs.

To learn more about ThinkVantage Technologies, open the ThinkVantage Productivity Center by pressing the ThinkVantage button.



Using Access Help (online manual) and the included manuals

To find detailed information about your computer, open Access Help, or see the Safety and Warranty Guide or the Service and Troubleshooting Guide.



Access Help

Access Help is a comprehensive online manual that provides answers to most of your questions about your computer, helps you to configure preinstalled features and tools, or solve problems.

To open Access Help, do either of the following:

- Press the ThinkVantage button. Under Quick Links in the ThinkVantage Productivity Center, click "Access on-system help."
- Click Start, move the pointer to All Programs; then to ThinkVantage. Click Access Help.



Safety and Warranty Guide

- Important safety information
- Operating environment and other important notices
- Warranty information

Service and Troubleshooting Guide

- Introduction to other sources of information
- Important tips for taking care of your computer
- Diagnostics and troubleshooting
- Recovery options
- Help and service
- Warranty information for your computer

© Copyright Lenovo 2009.
All rights reserved.

The following terms are trademarks of Lenovo in the United States, other countries, or both:
Lenovo ThinkLight UltraNav
TrackPoint ThinkPad
ThinkVantage UltraConnect

Other company, product, or service names may be trademarks or service marks of others.

Printed in China

For Barcode Position Only